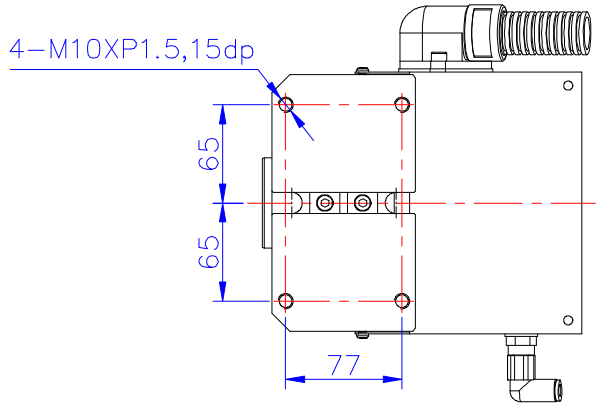
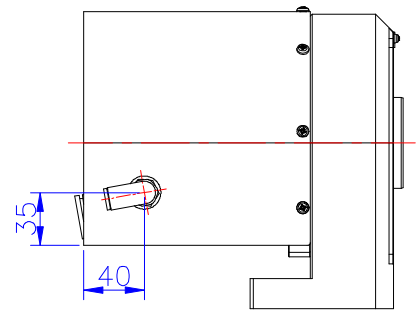
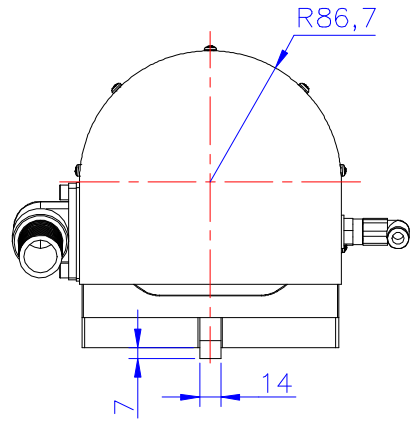
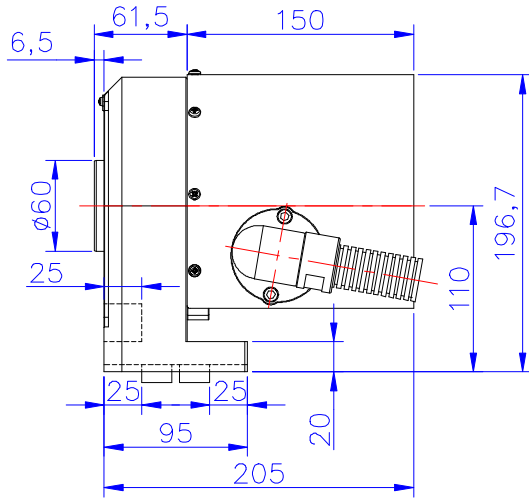
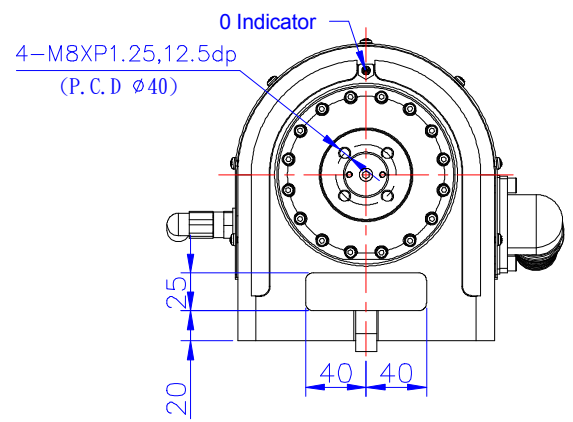
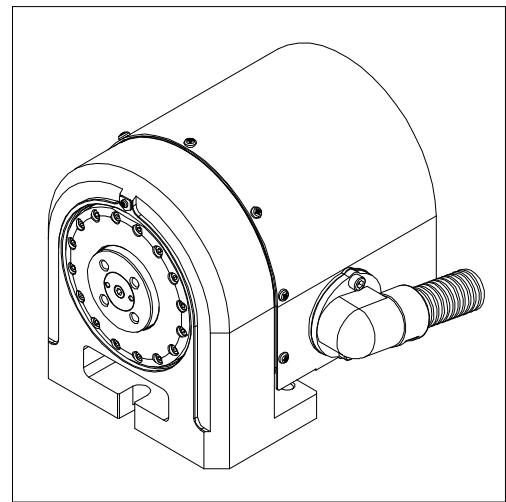
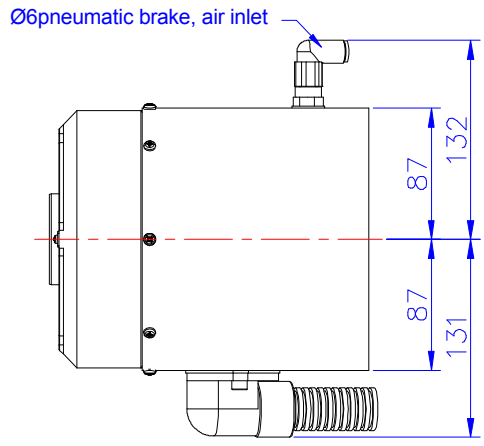


**Technical data**

MODEL	EDD-125AP-XXXX
Brake Source (Pneumatic :5kg/cm <sup>2</sup> )	NA(there is reserved space and customers can prepare brake by themselves)
Spindle Type	Spindle Ø60 X6.5L
Spindle Hole	No Through Hole
Cooling	Natural Cooling

MODEL	Encoder				
	TYPE	SIGNAL	RESOLUTION	Indexing Accuracy	Repeatability
EDD-125AP-HE15	Heidenhain	EnDat2, 2/22	25bit	±25 Arc. Sec.	10 Arc. Sec.
EDD-125AP-NNK4	NIKON	NIKON Serial abs interface	20bit	±40 Arc. Sec.	10 Arc. Sec.
EDD-125AP-NNK5	NIKON	NIKON Serial abs interface	24bit	±40 Arc. Sec.	10 Arc. Sec.



Remark: 1.This unit 0 degree is same as motor. Brake is inclu  
2.Pneumatic 5Kg/cm<sup>2</sup> ,Brake force:18Kg-m<sup>2</sup> sive.

△	REASONS FOR REVISION	CORRECTION DATE	VERSINO	UNIT	PROJECTION	SCALE	DRG. No.	EDD-125AP	Designed	2018.03.28
			1	MM		Frame 5 : 1 Drawing 1 : 1				
NO								EDD-125A (over view)	青嘉天碟 TOPDISK	