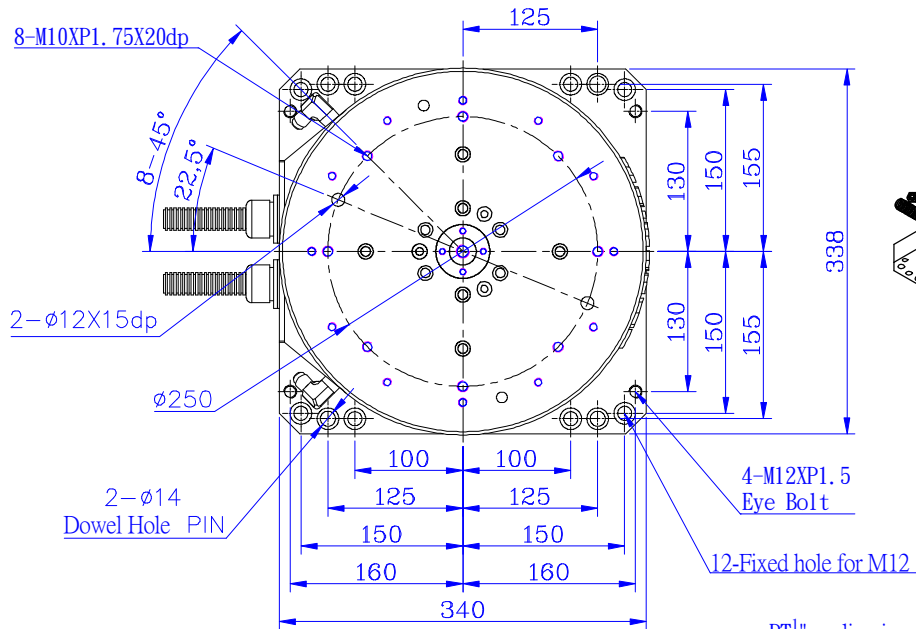


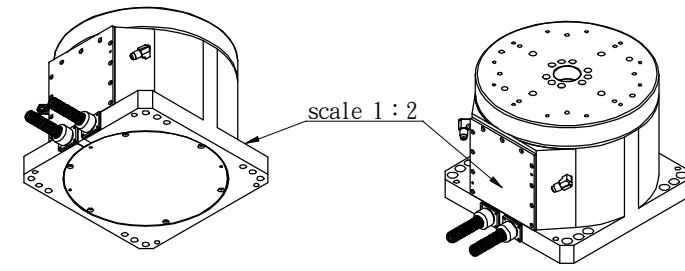
top view  
partial outline diagram



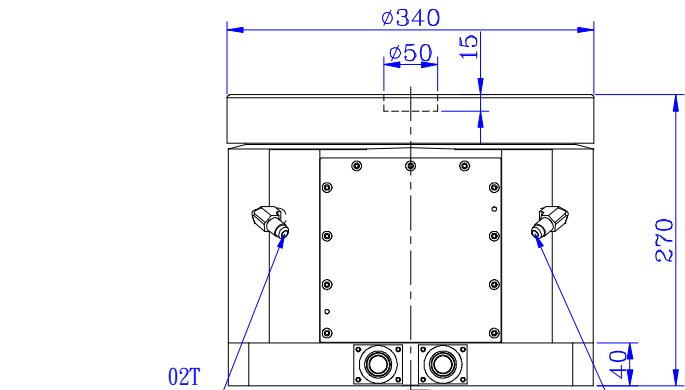
2- $\phi$ 14  
Dowel Hole PIN

4-M12XP1.5  
Eye Bolt

12-Fixed hole for M12

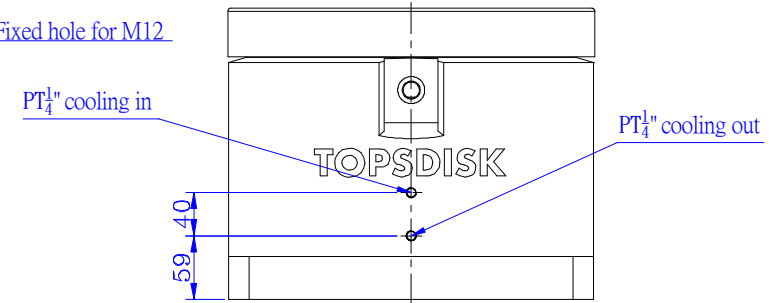
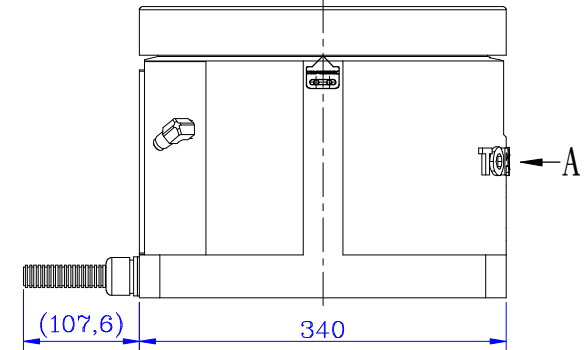


scale 1 : 2

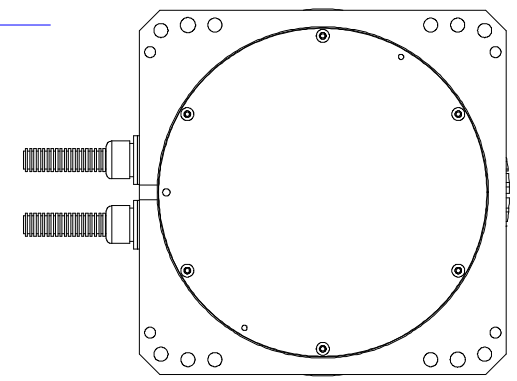
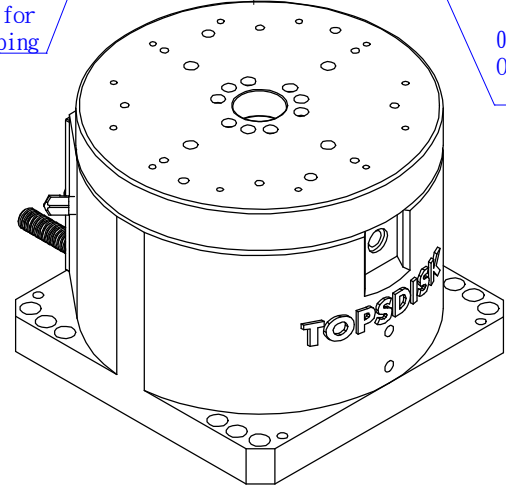


02T  
Oil connector for  
unclamping

02T  
Oil connector for  
clamping



A VIEW



Technical data		Accuracies	
Table top size	$\phi$ 340	Table top flatness	0.02
Height	270	Parallelism of table top to base	0.02
Power of Drive	Pneumatic 5kg/cm <sup>2</sup>	Center bore Run out	0.02
	Hydraulic 35 bar Max	Indexing accuracy	$\pm$ 20" (Pneumatic) $\pm$ 5" (Hydraulic)
Divisible number	2 · 3 · 4 · 6 · 8 · 12 · 24	Repeatability	$\pm$ 5" (Pneumatic) $\pm$ 2" (Hydraulic)
Table rotation	CW/CCW		
Clamping Force	160Kgf@5kg/cm <sup>2</sup>	Encoder Absolute	
	1100Kgf@35 bar		
Net. weight(approx)	159 kg	<p>2000 kgf Thrust against table top (Inclusive of Work piece +fixture)</p>	
Table top load 175kgs (Work piece +fixture)			
<p>Tilting moment FXL=1750 Nm</p>			

NO	REASONS FOR REVISION	CORRECTION DATE	VERSINO	UNIT	PROJECTION	SCALE	Match models	DRG. No.	DH3-340C-LBS4	Designed	106.08.24
						Frame					
			1	MM		Drawing	DH3-340C	NEME	DD INDEX TABLE	SPINTOP MACHINERY CO., LTD. TEL: (04) 25682975 TOPSDISK	