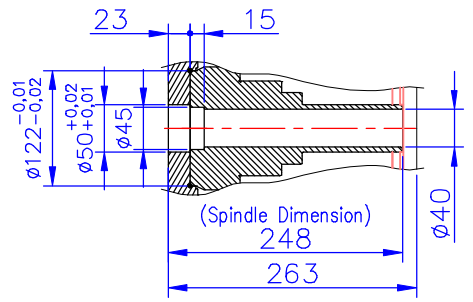
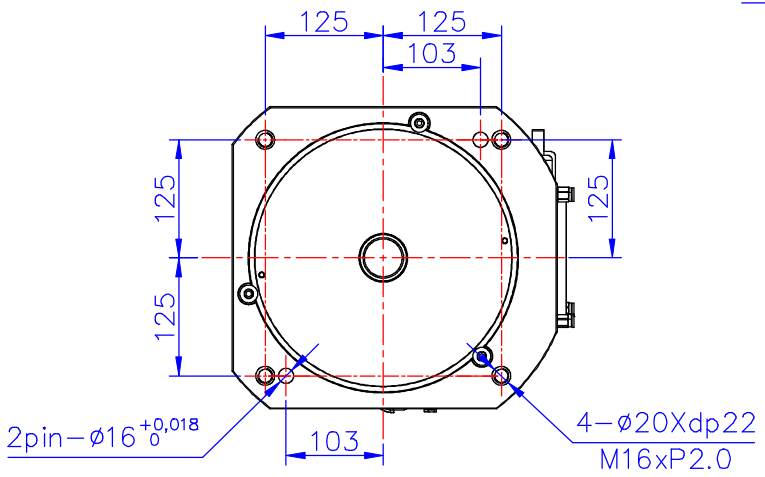
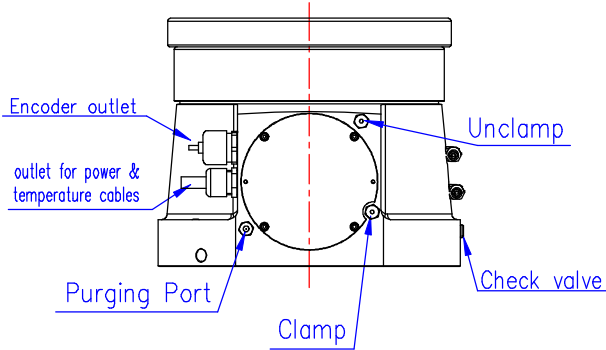
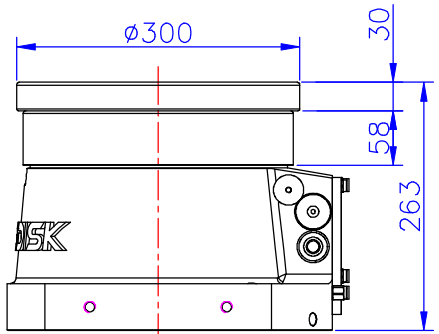
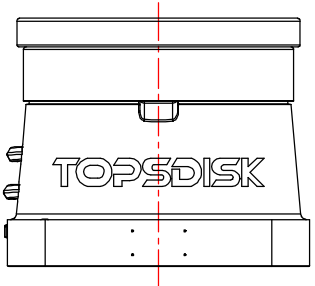
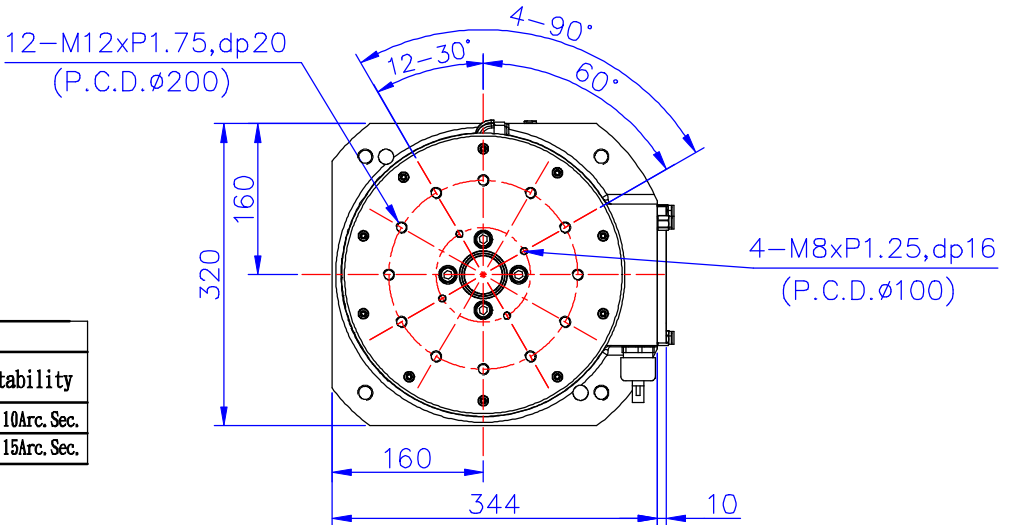


Technical data	
MODEL	DGH-300YP-0000
Brake source : (Pneumatic :5kg/cm <sup>2</sup> )	brake force:90kgf/m
Spindle type	Flange type, spindle $\phi 122_{-0.02}^{+0.01}$ , hole $\phi 45 \times 15L$
Spindle hole	$\phi 40$ (through hole)
Cooling	Liquid cooling (prepared by machine makers)
Spindle amplitude	0.01mm
continuous r. p. m	75rpm
Max. speed (1sec)	150rpm

MODEL	Encoder			
	INTERFACE	RESOLUTION	Indexing Accuracy	Repeatability
DGH-300YP-HE12	Heidenhain Serial Interface, EnDAT 2.2/22	25bit	$\pm 25$ Arc. Sec.	Within 10 Arc. Sec.
DGH-300YP-NNK3	NIKON Serial abs interface	22bit	$\pm 20$ Arc. Sec.	Within 15 Arc. Sec.



NO	REASONS FOR REVISION	CORRECTION DATE	VERSION	UNIT	PROJECTION	SCALE	DRG. No.	DGH-300YP-0000	Designed	2017.12.07
			2.1	mm		Frame 8:1 Drawing 1:1	NAME			